



www.gil-mc.com



For The Sake
Of Good Order





About Us

GIL Marine Consultants has been recently founded by experts in the oil industry. Our team is composed of members with marine, inspection and trading operations backgrounds.

Our head office is located in Algeciras, from where we cover Gibraltar Strait area, including Ceuta. This location permits us to cater our customers' needs in one of the major bunker hubs worldwide. We can assist them with a wide range of inspection and advisory services.

GIL has established a long and sustainable trade cooperation with its partners, building a solid geographically distributed global network. This enable us to provide the same competitive conditions and quality standards at all ports worldwide, facilitating the service to our customers by using a single point of contact for any operation at any port.

Our main target is **offering to our customers a tailor-made service**, providing them a high added value by an enhanced performance of their operations.

Why appointing a Loss Control Marine Expeditor?

Every energy deal is composed of various parts each of which has multiple particular aspects, and cargo operator must be on top of all of them to ensure deal's profitability is not jeopardized. Operational is only one of these parts, but this is especially important, technical and critical. Appointing a Loss Control Marine Expeditor will give the confidence to cargo operator in charge that:

- ▶ All the operational instructions are thoroughly followed point by point.
- ▶ Losses are prevented from taking place regardless wherever those may occur.
- ▶ In case losses occur, be able to determine where and why those occurred and provide a detailed explanation.
- ▶ Trading firm's interests are protected at all times, this is particularly important at not frequented ports.
- ▶ Any immediate attention or urgent situation will be notified up-to-the-minute.
- ▶ All tasks will be properly coordinated in order to minimize delays and port turn-around time, dramatically reducing demurrages costs.
- ▶ In case of blending / commingling cargoes, loading plan will prepared, revised, agreed and supervised by Loss Control superintendent in order to ensure a proper outcome.
- ▶ There is a direct contact in place at all times, so, in case any urgent action is required this can be immediately informed to vessel / terminal or if any information from field is needed by operator this can be immediately requested and provided.

Bearing in mind the above mentioned points, cargo operator would then have time to focus on the other parts of the deal such as revising contracts and invoices, being aware of pricing and payment dates, scheduling cargoes and vessels, preparing documentation or inputting required data on internal systems, having the "peace of mind" that comes with knowing that field operations are under control.

In **GIL MC** we're always open to listen to our customers, identifying their needs and providing them the best possible solution, **always For The Sake Of Good Order.**

Our Services



1 ► Cargo Expediting & Loss Control

Our highly experienced superintendents will ensure the compliance of customer's instructions, constantly looking after and protecting their interests. Our attendance will significantly **reduce the risk of loss or delays** and our customers **get noticed of any immediate attention or urgent situation up-to-the-minute**. Also, any last-minute instruction from customer will be notified to vessel's officer or terminal control at the very moment.



2 ► Product Blending

In GIL we're fully aware that blending operations can be highly profitable but those are also extremely critical. **GIL MC puts at your disposal an extensive experience** on shore side and on board vessels blending operations. We'll provide full assessment to operators and we'll monitor the whole process in place for everything to turns out as planned.



3 ► Long term projects

Our expeditors are fully qualified and besides attending general loss control (spot basis), they can also occasionally be retained for long term projects on any installation, where **we can assist traders and operators** in accomplishing trade deals highlighting problems and reducing some of the losses taking place, **improving load/discharge efficiency** or assisting on regular blending/doping operations or offloading complex product batches.

Taking care
of each cargo
**as if it were
our own**



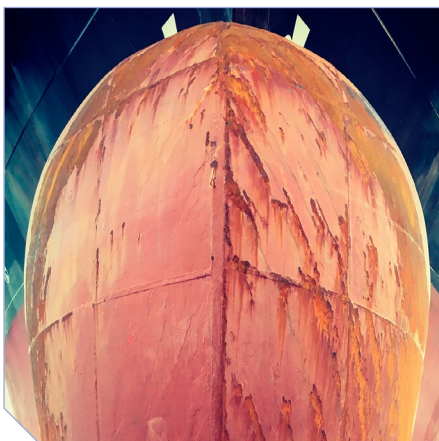
4 ► Analysis & Urgent Logistic Services

Our partners fully certified laboratories have capabilities to test full range of petroleum and chemical products. Operating on a **24-7-365** basis and equipped with a large number of testing instruments which enable an immediate action on urgent samples. **In case required, GIL provides a private urgent transport service for samples** from any location to a specific installation or laboratory.



5 ► Bunker quantity / quality surveys

Our bunker inspection **skilled workforce members have more than 20 years' combined experience on the field**. Under such condition, we'll ensure a smooth development and perfect outcome of your bunkers supply operations. **To warrant that drip sampling** was conducted properly during the whole supply, we offer a drip sampling witnessing service, we'll assist on sample preparation that can be disembarked for immediately conducting urgent tests on our local associated lab or shipped via courier or by our private urgent service **to any national or international laboratory**.



6 ► On/Off Hire & Condition Surveys

GIL will ensure that your ship's deliveries and re-deliveries get properly certified **avoiding any possibility of overstated or understated of bunkers on board**. Also, if required by customer, damages will be checked and reported to protect him from any potential non-corresponding damage claims.

Your operations
worldwide
**on a centralized
contact point**



7 ► **Detective surveys (221B)**

If there is any suspicion of concealed bunkers on a ship, **our qualified inspectors will conduct a thoroughly inspection on board** seeking for any “magic pipe”, hidden compartment etc. in order to certify the actual quantity of bunkers on board.



8 ► **Additives Supply & Injection**

We can provide full assessment, starting with analysis, advisory, supply and injection of a **wide range of additives** for different cargoes treatment to correct any deficiency that could dramatically impact on price or could start considering the possibility of cargo being prevented to be delivered.

**Other
Services**

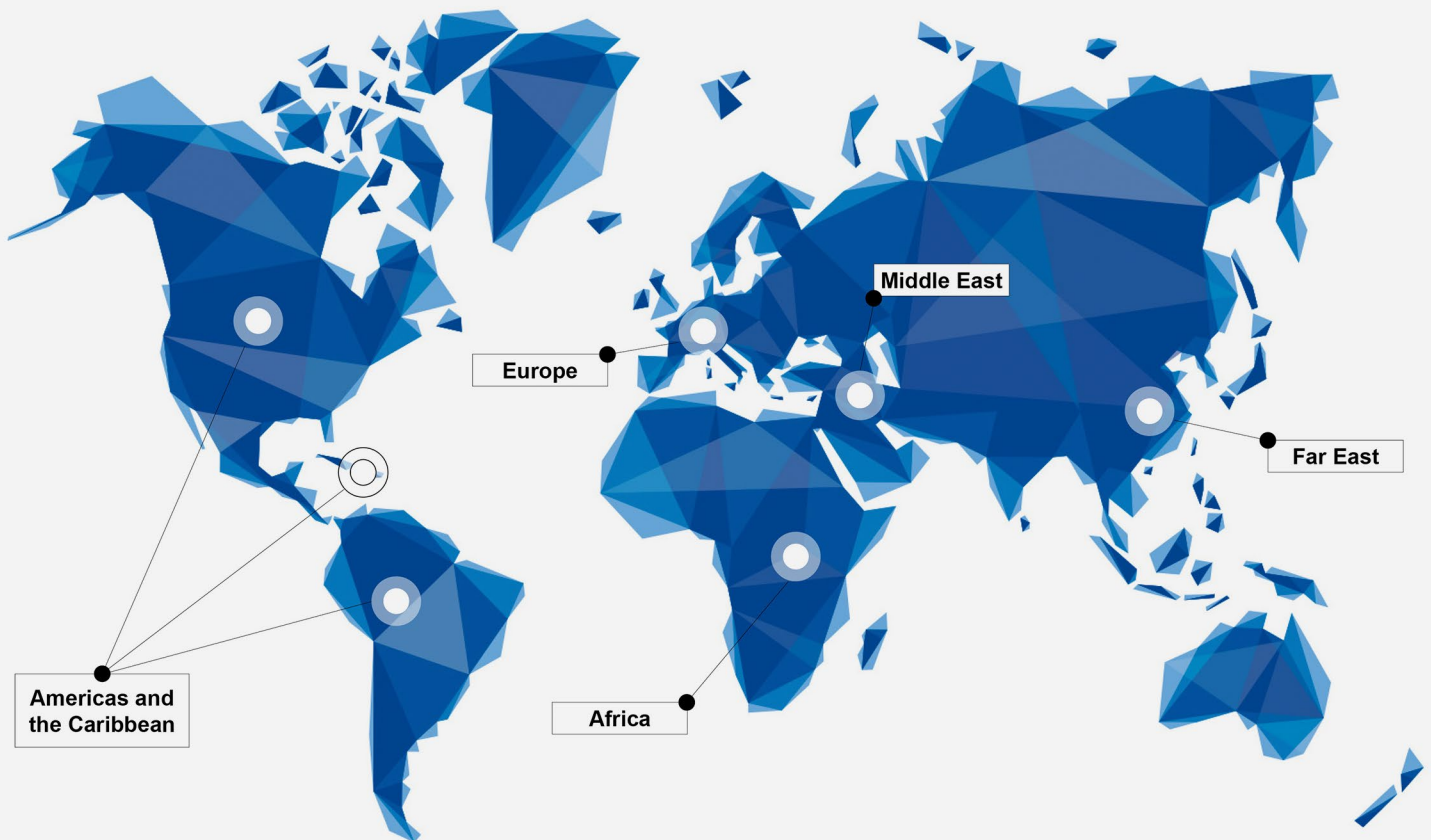
**OBQ Surveys
Internal Tank inspections for CPP
Containers inspections
Pre-purchase inspection
Internal auditors for ISM/ISPS/MLC**



GIL

MARINE CONSULTANTS

A long and sustainable trade cooperation, **at all ports worldwide**



GIL MARINE CONSULTANTS

ALGECIRAS (HEAD OFFICE)

Edificio Fuerte Santiago 2, 5^oE – (11201) Algeciras – Spain

Call Us: **+34 622 804 340** | Email: **info@gil-mc.com**



Europe, Africa & Middle East | **emeaops@gil-mc.com**

Americas, Caribbean & Far East | **ops@gil-mc.com**